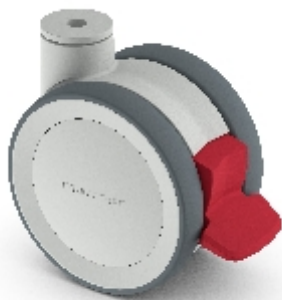








Swivel castor with total brake mounted behind:

305011 (TWIST)





Technical data

Diameter		125 mm
Tread width		2x20 (81) mm
Height		143 mm
Bolt hole diameter		10 mm
Brake swivel radius		133 mm
Load capacity		125 kg

Technical description

TWIST plastic twin wheel castor

fork is made of glass fiber-reinforced polyamide

maintenance-free construction

also available with 12 mm bolt hole, top plate and a conductive wheel version

on request also available with lower overall height of 130 mm



Wheel

polyurethane tyre (Shore A 95)

glass fiber-reinforced polyamide wheel centre

ball bearing